

# Amazing Grace

Theme with two variations  
for clarinet and piano,  
on the trad American melody  
'New Britain'

arranged by **Nigel Williams**

# Amazing Grace

for Clarinet and Piano

Trad American melody 'New Britain'  
arranged by Nigel Williams

**Andante**

Clarinet in B $\flat$

*mf*

Piano

*p*

7

Cl.

*p*

Pno.

*mf*

14

Cl.

**rall.** . . . **a tempo**  
*var. 1*

Pno.

**rall.** . . . **a tempo**

*p*

21

Cl.

*mf*

Pno.

*mf*

3

27

Cl.

Pno.

*mp*

32

Cl.

Pno.

*mf*

38

Cl.

*mf*

Pno.

44 **rall. .** **a tempo**  
*var. 2*

Cl. *mf*

Pno. **rall. .** **a tempo**  
*mf*

50

Cl.

Pno.

55

Cl.

Pno.

61 **rall. .**

Cl. *p*

Pno. **rall. .**  
*p*

66

Cl.

rall. .

Pno.

*mf*

*p*

rall. .

This musical score page contains measures 66 through 70 for a Clarinet (Cl.) and Piano (Pno.) duo. The key signature has three flats (B-flat, E-flat, A-flat), and the time signature is 2/4. Measure 66 features a half note G4 in the Clarinet and a half note chord of F4-A3 in the Piano. Measure 67 shows a whole note G4 in the Clarinet and a half note chord of F4-A3 in the Piano. Measure 68 contains a half note G4 in the Clarinet and a half note chord of F4-A3 in the Piano. Measure 69 has a half note G4 in the Clarinet and a half note chord of F4-A3 in the Piano. Measure 70 concludes with a half note G4 in the Clarinet and a half note chord of F4-A3 in the Piano. The tempo marking 'rall.' (ritardando) is present above the Clarinet staff in measures 66 and 69, and below the Piano staff in measure 69. Dynamic markings 'mf' (mezzo-forte) and 'p' (piano) are placed below the Piano staff in measures 67 and 69, respectively. The page number '5' is located in the top right corner.

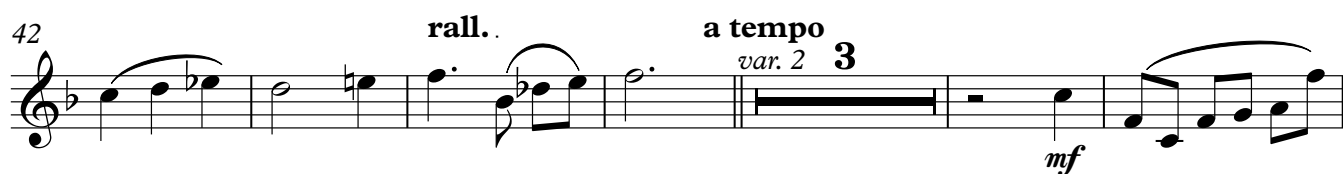
Clarinet in B $\flat$

# Amazing Grace

for Clarinet and Piano

Trad American melody 'New Britain'  
arranged by Nigel Williams

**Andante**



Piano

# Amazing Grace

for Clarinet and Piano

Trad American melody 'New Britain'  
arranged by Nigel Williams

**Andante**

Measures 1-8 of the score. The key signature is three flats (B-flat, E-flat, A-flat) and the time signature is 3/4. The piano part features a series of chords in the right hand and single notes in the left hand. A dynamic marking of *p* (piano) is present in measure 2.

Measures 9-16 of the score. The piano part continues with chords and single notes. Dynamic markings include *mf* (mezzo-forte) in measure 10 and *p* (piano) in measure 14. A *rall.* (rallentando) instruction is placed above measure 16.

Measures 17-23 of the score. The tempo changes to **a tempo** above measure 17. The piano part features more active eighth-note patterns in the right hand. Dynamic markings include *p* (piano) in measure 17 and *mf* (mezzo-forte) in measure 23.

Measures 24-29 of the score. The piano part continues with eighth-note patterns. A dynamic marking of *mp* (mezzo-piano) is present in measure 29.

Measures 30-35 of the score. The piano part concludes with eighth-note patterns in the right hand and chords in the left hand.

36

mf

This system contains measures 36 through 42. The music is in a key with three flats (B-flat, E-flat, A-flat) and a common time signature. The right hand features a melodic line with eighth and sixteenth notes, while the left hand provides a harmonic accompaniment with chords and moving lines. A dynamic marking of *mf* (mezzo-forte) is present in measure 37.

43

rall. . a tempo

mf

This system contains measures 43 through 49. It begins with a *rall.* (ritardando) marking above the staff in measure 43, which transitions to *a tempo* in measure 44. The right hand has a melodic line with eighth notes, and the left hand has a steady accompaniment. A dynamic marking of *mf* is shown in measure 44.

50

This system contains measures 50 through 56. The right hand continues with a melodic line, and the left hand provides a consistent harmonic support. There are no dynamic markings in this system.

57

p

This system contains measures 57 through 63. The right hand features a melodic line with some rests, and the left hand has a steady accompaniment. A dynamic marking of *p* (piano) is present in measure 61.

64

rall..

mf p

This system contains measures 64 through 70. It begins with a *rall..* (ritardando) marking above the staff in measure 64. The right hand has a melodic line, and the left hand has a steady accompaniment. Dynamic markings of *mf* (mezzo-forte) and *p* (piano) are present in measures 66 and 68, respectively.